



BUILDING, PLANNING & DEVELOPMENT

260.925.6449 p | 260.925.3342 f | 210 S Cedar St / PO Box 506 Auburn, IN 46706 | bpd@ci.auburn.in.us

October 28, 2021

Christie Stanifer, Environmental Coordinator
Indiana Department of Natural Resources
Division of Fish and Wildlife
402 W Washington Street, Room W273
Indianapolis IN 46204-2781

RE: Early Coordination / Environmental (NEPA) Review

Dear Ms. Stanifer:

The City of Auburn is conducting early coordination/environmental review for a pedestrian bridge and trail project along a portion of Cedar Creek. The project is known as "Cedar Creek Trail – Outdoor Theater Leg." The project is within the City of Auburn, Indiana and DeKalb County, Indiana.

The project includes a minimum 10-foot wide asphalt trail with at least a 2-foot recovery area on each side of that trail. This trail will begin at the intersection of Union Street and East Eleventh Street. The trail will head due east across Cedar Creek. This Cedar Creek crossing will make use of a historic single lane bridge that has been preserved when it was removed and will be re-purposed as a pedestrian-only bridge across Cedar Creek.

Once on the east side of Cedar Creek, the trail will head south along Cedar Creek crossing the Cliff Metcalf Regulated Drain. After crossing the drain, the trail will make use of an abandoned railroad bridge that will be renovated as part of this project to cross back to the west side of Cedar Creek.

Once on the west side of Cedar Creek, the trail will follow the former railroad corridor south southwest to Cedar Street. The trail will split during this segment with an additional leg heading due south to Eckhart Park.

The City intends to submit this for Round 3 Next Level Trails Funding Request for Round 3, due by December 1, 2021. We hope to have all documentation in place for submittal by November 23, 2021.

The USGS Quadrangle Map is enclosed. The UTM coordinates of the center of the trail site are approximately 85.050083°, 41.361687°. Additional maps are enclosed showing the floodway and flood fringe, as well as points of interest.

Should you need additional information to conduct this early coordination/environmental review, please contact me.



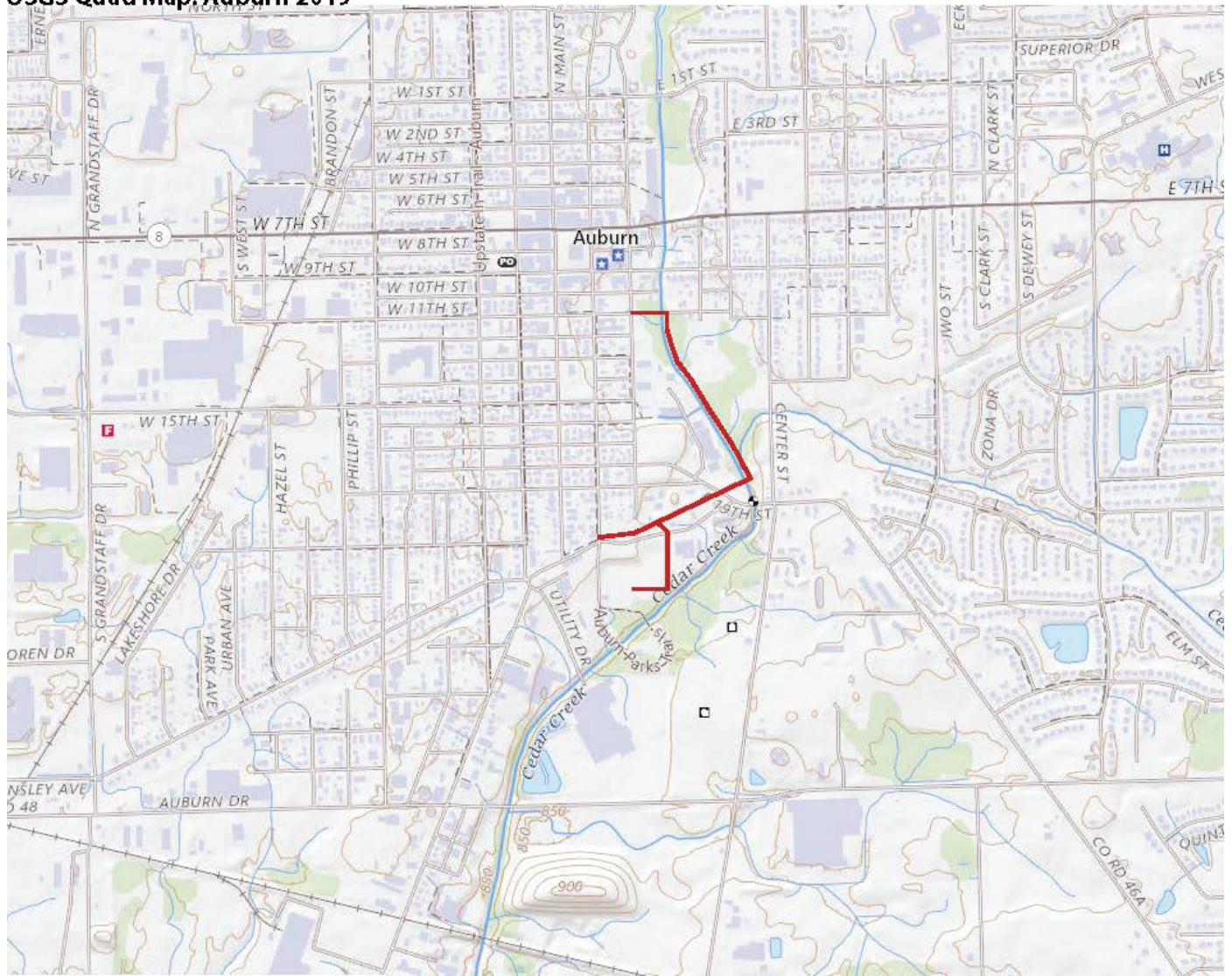
BUILDING, PLANNING & DEVELOPMENT

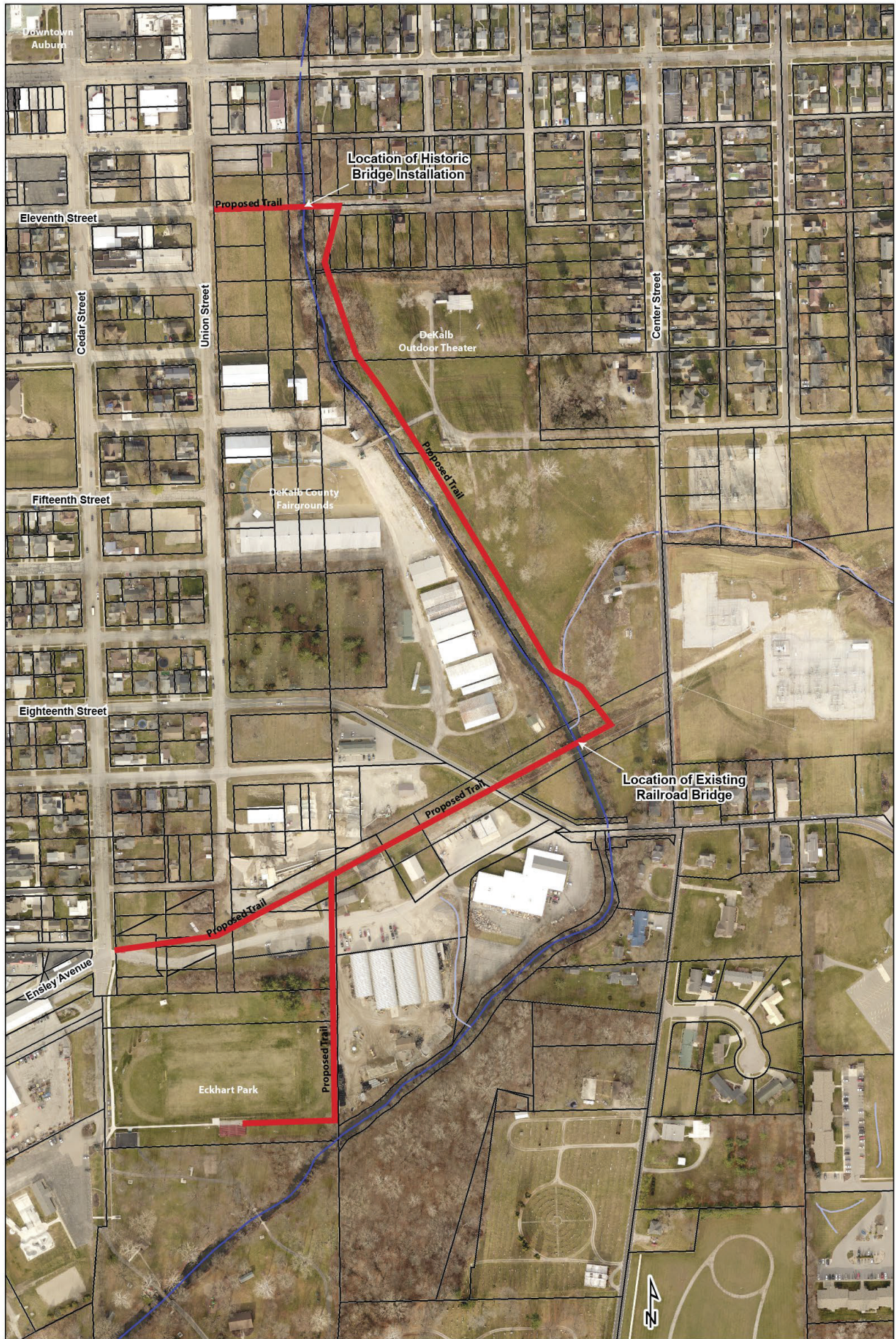
260.925.6449 p | 260.925.3342 f | 210 S Cedar St / PO Box 506 Auburn, IN 46706 | bpd@ci.auburn.in.us

Sincerely,

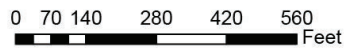
Amy M. Schweitzer, AICP
Administrator

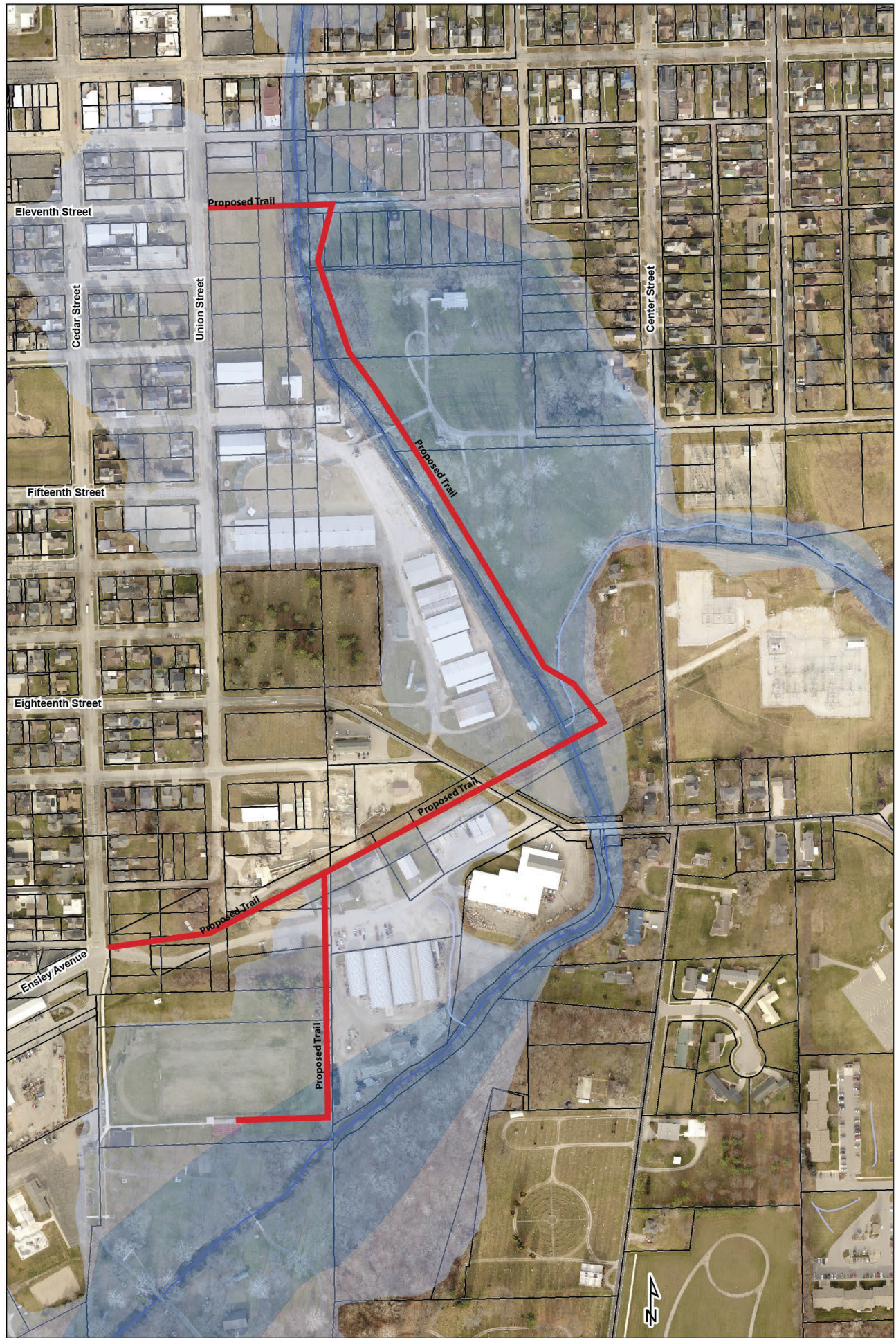
USGS Quad Map: Auburn 2019





Limitations of Use/ Liability:
 This map product and the data therein is for informational purposes only. The County City GIS Committee and its partnering agencies do not in anyway guarantee the accuracy of this data, and is not responsible for any ramifications of the use of this map product or data. For more information about this map product and/or its data, please contact CoCIGIS.





Limitations of Use/Liability:
 This map product and the data therein is for informational purposes only. The County-City GIS Committee and its partnering agencies do not in anyway guarantee the accuracy of this data, and is not responsible for any ramifications of the use of this map product or data. For more information about this map product and/or its data, please contact CoCIGIS.

